

Collector Glass News

The Promotional Glass Collectors Association Newsletter – Collector Glass News. Included in this sample issue are articles from the last several years of the club newsletter. More information can be found at www.pgcaglassclub.com – including new issue information, online glasses database, regular collector glasses auctions, articles, web site links, club glasses and message boards. BELOW is the most recent PGCA club glass: 2018 Scooby Doo!



Disney MATERVA glasses and Pitcher & interesting Disney by Brian Callahan

A few months ago I bought in Ohio a very interesting Disney Snow White pitcher, one I had not seen before. The pitcher has Snow White and the seven dwarves on it, in blue and white colors, along with a Materva logo. Materva is a Cuban soft drink w. yerba mate as one of the ingredients. While researching the glasses I found some information on several web sites. <http://yurbanlegend.com/> the web site for Yerba Mate Connoisseurs by Jim Worsham had a nice picture of a Disney Materva pitcher with various Disney characters. Jim kindly allowed me to share the picture in CGN. I then remembered that there had been a mention of a Materva glass in an earlier CGN and found that in Aug/Sept 2001 Issue #67, that Dale Morrison had sent in a great picture of the same pitcher with six (6) glasses – each glass has different characters. The glasses shown were Horace, Clarabelle, Donald Duck, Pluto, Minnie Mouse and Goofy. The characters on the pitcher include these as well as Mickey Mouse. Shown below on the left is Jim's picture of the Materva pitcher – on the right is a picture of the Materva Snow White pitcher and 3 Materva Snow White glasses. There are 7 dwarf glasses and one Snow White glass in this Materva set.



My source for the six (out of 8) glasses that go with the Snow White pitcher was the Cuban Collectibles web site - <http://www.cubacollectibles.com>. I was very pleased with the quality and service/shipping for the six glasses - Snow White Materva glasses I bought there and I also got a couple other Materva glasses, since I find myself now a Materva glass collector! The other glasses were from Cuban baseball teams – I also have found and bought one of these Materva baseball team glasses on Ebay. In case any PGCA members find them, I am still looking for the Doc and the Sneezy Materva glass. Page 3

(Part 1) **June Foray 1917 – 2017**

by Brian Callahan & Matt Maloney



BRIAN: Earlier this year on July 26, 2017, the fabulously talented voice actress June Foray passed away. Many glass collectors are familiar with, and have in their collections, cartoon glasses with images of characters whose voices she made famous in her long career. I asked animation devotee and long time glass collector Matt Maloney to share some information and thoughts about June, her career and the cartoon glasses.



Early Bullwinkle & Rocky glass Pizza Hut CB Lingo glass

'Toon tumbler Rocky glass

MATT: First thought that comes to mind is that you used the term that W.B. cartoon director Chuck Jones felt was most accurate in describing her role. He said "one of the misconceptions about June Foray is to think of her as a 'voice over'. She was worthy of the word 'actress.'" Jay Ward apparently felt the same way. June herself recalled that, in her first interview with him, Jay described the character he was developing and requested a perky young boy voice for him. He hired her as the voice of Rocky and ultimately of numerous additional characters.

Second thought is that many people, even among cartoon character glass collectors, are unfamiliar with June Foray and the role she played in developing many of those characters' personalities. Understandably so. As was typical until recently, voice actors were seldom given screen credit. Mel Blanc's name remains the most well-known one because of the screen credit he negotiated in his contract with Warner Bros.

BRIAN: I remember vividly when I was quite young, perhaps 1st or 2nd grade, listening to Capitol Records children's records with cartoon characters, often voiced by June Foray or Mel Blanc. Then during later years I would look forward to the Rocky and Bullwinkle Show, to see the wacky adventures and all the interesting characters. June voiced Rocky, Natasha and Nell Fenwick, from the Dudley Do Right cartoons. And who could forget the Warner Brother's cartoons featuring Tweety and Tweety's elderly owner Granny? Granny was another voice that was done in grand style by June Foray. June also did the voice of Jokey Smurf.



MATT: And the gleeful I-love-being-a witch cackle of Witch Hazel. And the why-Santa-whyyy

pleadings of little Cindy Lou Who. Distinctive voices and personalities provided for characters in a range of ages from tot to elderly, and from innocent to evil. So that while listening to those records the images and personalities of those characters came vividly to mind for you. Whether for characters artfully animated for theatrical cartoons or minimally animated for TV cartoons, the work of the voice actors and actresses done well is crucial to making that character seem real on screen or off. That is why some people in the business refer to TV cartoons as “illustrated radio”. And why I'm not at all surprised to learn that June Foray's earliest voice work was in radio at age 12.



Raggedy Ann Pedestal glass PROTOTYPE Woody,Knothead,Splinter Gabby Gator w. Splinter

BRIAN: Reading various articles on June Foray, several refer to her as the female Mel Blanc, which is a tremendous compliment, but I always just thought of her as the one and only June Foray. The voices she did range all through the spectrum of cartoons – Oswald Rabbit, Lucifer in Cinderella, and Raggedy Ann among others. June also voiced characters in Hanna Barbera cartoons including characters in Scooby Do, The Jetsons, and Flintstones. She did a voice for the Simpsons, in their first year, in an episode named Rubber Baby Buggy Bumper Babysitting Service – say that 3 times! June also voiced an excellent duo of cartoon glass characters, Knothead and Splinter from the Woody Woodpecker cartoons.

MATT: *And many other characters that were one-use supporting cast. Or characters of much*

more recent vintage and not even around yet in the 1970s heyday of promo glasses. But the fact that she continued to voice new productions featuring her Golden Era characters and to add new characters to her resume' until her passing at age 99 is really quite extraordinary.

What better way to close Part 1 than to quote June Foray's own reflections on her life in cartoon land.

"I love all the parts that I do because there's a little bit of me in all of them. We all have anger and jealousy and love and hope in our natures. We try to communicate that vocally with the sketches that you see on the screen and make it come alive and make it human. That's what I enjoy doing."

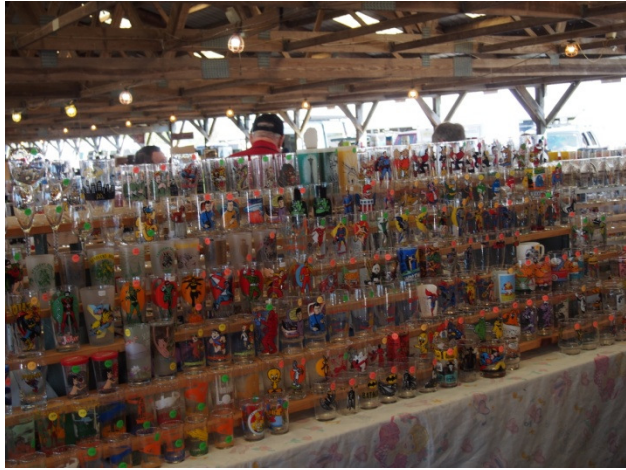
Which leaves us once again pondering the question "Why were some memorable characters overlooked while some rather obscure ones were used for Promo Glasses?"

Plenty of thoughts, observations, explanations and a quote or two along those lines to share in an upcoming article (tentatively titled "Part 2. NOTEWORTHY CHARACTERS? Cool Cat and Friends") in the next issue of Collector Glass News.



Jokey Smurf Glass Simpsons Family glass Pictures courtesy of glass411.info and Steve Simek, Matt Maloney, Brian Callahan and various data base contributors. Page 7

PGCA Pennsylvania Meeting April 2017 & Renninger Antique Mkt



I had the pleasure of setting up a display table at the National Depression Glass Association Show & Sale in Tiffin, Ohio this summer. This was a 2 day glass and pottery show, in a large facility at Tiffin University. Many of the NDGA members created and setup displays of all kinds of glassware, much focusing on local Tiffin Company glassware. My display featured children's glassware, both tableware items from the 1930's and 1940's from Akro Agate in West Virginia, and cartoon glasses and bowls and box sets from the 1930's through 1970's. I tried to show mainly older glasses to go with the Depression Era theme of the NDGA event. It was a lot of fun to setup the display and I got some nice comments from the attendees. I also was able to visit the local Tiffin Glass museum as well as the history museum in Tiffin.



The display had a lot of nice early Disney glasses including a set of the Globetrotter glasses, a set of Dumbo glasses, a Pinocchio set in an advertising box, a set of the 1942 banner top Donald Duck glasses in Libbey box, as well as a Mickey Mouse milk bottle. Other glasses included some Gulliver's travels glasses, plate, mug, a Beatles glass and mug and the set of Terrytoons characters and a box display of Bobby Benson glasses. There was also a few Davy Crockett glasses, Hopalong Cassidy glasses and lamp, and 2 early Looney tunes glasses - Merrie Melodies with the two birds and Looney Tunes with Porky's Express. Out of the picture but in the display were also some of the Akro Agate children's dishes from my wife Mary's collection.

Brian Callahan

This June I read that Janet Waldo had passed away. She was a talented voice actress who had done the voices for many TV and Movie characters, including quite a few that have appeared on cartoon glasses. Her passing got me to thinking about all of the great talents that provide the voices for cartoon characters, both from older years and currently. Several that come to mind are Mel Blanc, who was perhaps the best known and prolific voice actor and did the voices for many of the Warner Brothers characters. Another well known actress for voices is June Foray, who did Rocky the flying squirrel and many other cartoon voices. A current actor that I have greatly enjoyed is Dan Castellaneta, the voice of Homer Simpson on the Simpsons, and also the voice of many other Simpsons characters. All of these actors and actresses voiced characters that are on some of our favorite glasses. Shown below are some of the character glasses from characters that Janet Waldo performed, as well as a short summary of her biography. Pictures are from the glass411.info glass database. Thanks to Steve Simek for the DB & pics.



Judy Jetson



Josie from Pussycats



Princess from Battle of the Planets

Janet Marie Waldo (February 4, 1920 – June 12, 2016) was an American radio, television, animation and live-action film actress. She is best known in animation for voicing [Judy Jetson](#), Nancy in [Shazzan](#), [Penelope Pitstop](#), and Josie in [Josie and the Pussycats](#), and on radio for [Meet Corliss Archer](#). In television animation, she played Judy Jetson in all versions of the Hanna-Barbera television series The Jetsons. Waldo was the last surviving main cast member of the original The Jetsons series. In 1964–66, she took over the role of Pearl Slaghoople on The Flintstones, which was originally played by Verna Felton. Waldo reprised Mrs. Slaghoople on the Flintstones TV films I Yabba-Dabba Do! and Hollyrock-a-Bye Baby in the 1990s.

She later provided the voices for Nancy in Shazzan, Granny Sweet in The Atom Ant/Secret Squirrel Show, Josie in Josie and the Pussycats and Josie and the Pussycats in Outer Space, Penelope Pitstop in both Wacky Races and The Perils of Penelope Pitstop. She voiced Morticia Addams in the short-lived 1973 cartoon series adaptation of The Addams Family. Waldo was the voice of Princess and Susan in the English-language version of Kagaku ninja tai Gatchaman, known as Battle of the Planets, and Hogatha in The Smurfs.

I also see that Janet appeared as an actress on one of my favorite TV comedy shows, The Andy Griffith Show, in the episode A wife for Andy. The pictures below show her with Judy Jetson cartoon and also from her work on TV, as well as Penelope Pitstop in a Wacky Races cartoon glass. Brian Callahan



Wacky Races Glass

James Coleman is a glasses collector who has a tremendous collection of Star Wars glasses and memorabilia, from USA and International sources. He was kind enough to share some of his pictures and descriptions of very interesting, unusual and scarce Star Wars glasses for PGCA members and CGN readers. All photos are courtesy of James Coleman.



To the left ABOVE is an unusual Star Wars glass that was available at Walt Disney World in 2011 for the Star Wars Weekends events featuring Mickey Mouse and Darth Vader. The pitcher and 3 glasses ABOVE to the right are an unusually shaped set of Star Wars glasses and pitcher that was for sale at one of the Star Wars Celebration conventions of which I am not sure of the year and location of this particular event but they were made sometime after Disney came into the Star Wars scene because they have a Disney marking on the tag. The first Star Wars Celebration event was held in 1999 and they are held annually in different cities around the world.

NEXT PAGE – Page 28: LEFT TOP is Three glasses released for the Star Wars Celebration IV event which was the 30th anniversary celebration of Star Wars Episode IV A New Hope which was held at the Los Angeles Convention Center in California from May 24th - May 28 2007. They have a frosted / etched design on clear glasses. TOP RIGHT & BOTTOM is This set of four "Star Wars Trilogy Special Edition" glasses were available in Thailand when the special edition versions of the Star Wars trilogy movies were released, they were sponsored by Pepsi and showed up in sets and singles occasionally on Ebay for a while but I haven't seen any offered for a while now. But what is special here is that I managed to

acquire a couple different boxed sets of them which is pretty much unheard of in the hobby. I saw four of the small boxed sets of four come up for sale and I managed to get three of the four sets with one of them having been autographed by Darth Vader - David Prowse. What is even more unheard of is the other boxed set of twelve shown of which I've only ever seen this one set. The photos show the set of four glasses front and back, the autographed box and the ends of the boxes. The other set of photos show various views of the point of purchase display box that sets and singles were being sold from. They were available in a couple select stores that sold Pepsi products which included Royal stores, AM-PM stores and Number one stores.





ABOVE is RIGHT Rogue One Star Wars glass from Alamo Draft House, LEFT is Star Wars Force Awakens glass from Alamo Draft House.

NEXT PAGE Page 30 TOP - A set of three and a single from Walt Disneyworld in Florida that were available only at a gift store in the area of the park called the Jedi Training Academy. "Courage, Loyalty, Honor, Justice" is on the set of three and "Honor, Tradition, Master the ways of the Force" is on the single, all on cobalt blue glass. BOTTOM - is a set of 4 glasses promoting Star Wars Episode 1 The Phantom Menace movie and sponsored by Brisk Ice Tea. I've only seen two sets of these become available and missed the set on Ebay and lucked out and found a set on Amazon.co.uk. Online there are some commercials about the Brisk / Star Wars ads but I've yet to find much about when, where or why the glasses came about.

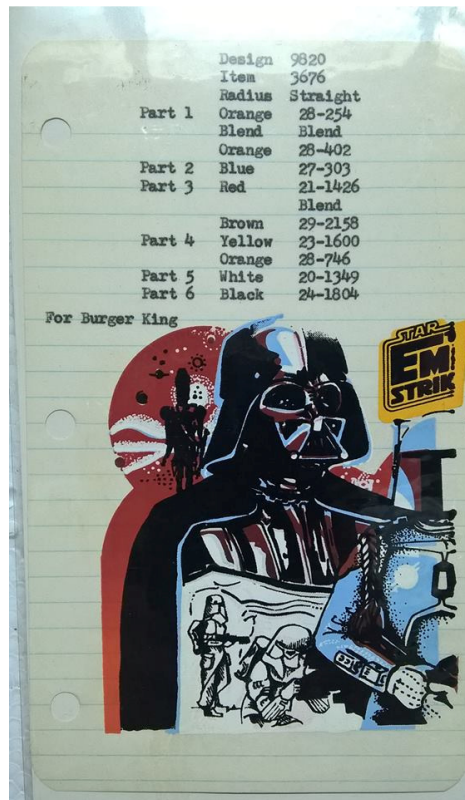


Jedi Training Academy glasses – cobalt blue glass

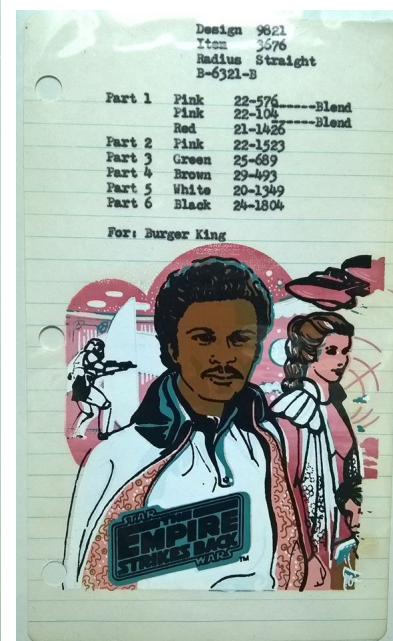
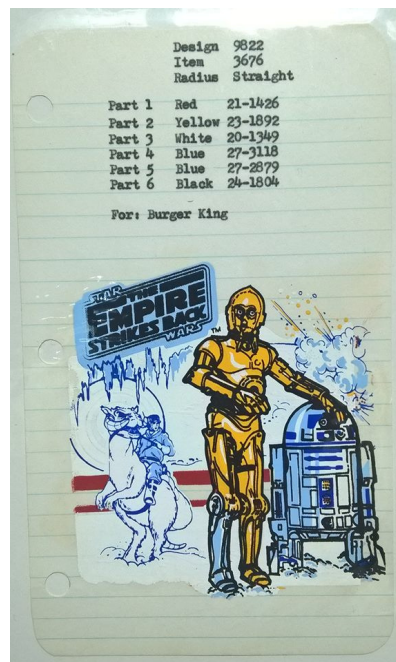


Brisk Ice tea Phantom Menace Star Wars 1 movie glasses

NEXT PAGE Page 31 - This is a special glass to me in my Star Wars glass collection that was only made available to the crew of George Lucas' Lucasfilm's ILM VFX and animation studio, called Industrial Light & Magic which does a lot of visual effects for movies. This glass was released for the movie Star Wars Revenge of the Sith in 2005. This is the only one I've seen become available for sale, are there more out there? Sure there must have been at least a very limited amount made, but are they hard to find? Very much so.



ABOVE LEFT – ILM Revenge of the Sith Crew Glass Mug. ABOVE RIGHT and BELOW - These are some kind of production related loose leaf sheets having to do with coding for the colors that were used for the Burger King Empire Strikes Back glass set made back in 1980.



PGCA Membership Application

Collector Glass News is the official publication of the **Promotional Glass Collectors Association**. As a member, you are eligible for all the benefits of the PGCA. These benefits include:

- The purchase of club glasses (limited edition)
- Attend club meetings
- Voting on club issues
- Place free wanted/for sale ads
- The opportunity to meet great people!
- Club Newsletter Collector Glass News (Current and Previous issues)

To **join or renew** your membership, fill out the information below:

Name _____
Address _____
City _____ State _____ Zip Code _____
Country _____
Phone (____) _____ - _____
Email Address _____
Collecting Interests/Main Interest _____
Secondary Interest _____

Do you wish to have your name published in the PGCA Membership List?__ Please check payment option you are sending and mail to address below:

_____ \$15.00 for 1 year (Collector Glass News – internet web access)
_____ \$20.00 for 1 year (Collector Glass News sent postal mail)
_____ \$25.00 for 2 years (Collector Glass News– internet web access)
_____ \$35.00 for 2 years (Collector Glass News sent postal mail)

Send checks MADE to PGCA to:

Brian Callahan 4535 Senour Rd Indianapolis IN 46239

You can join or renew online at

<http://www.pgcaglassclub.com/joinpgca.html>

Revised 2023